

Manoharbhai Shikshan Prasarak Mandal Armori's



**MAHATMA GANDHI ARTS, SCIENCE &
LATE NASARUDDINBHAI PANJWANI COMMERCE
COLLEGE ARMORI**

Dist. Gadchiroli (Maharashtra) 441 208

Affiliated to Gondwana University, Gadchiroli.

Re-accredited by NAAC 'A' with 3.24 CGPA (2022)

**ANNUAL QUALITY ASSURANCE REPORT
(AQAR) 2022~2023**

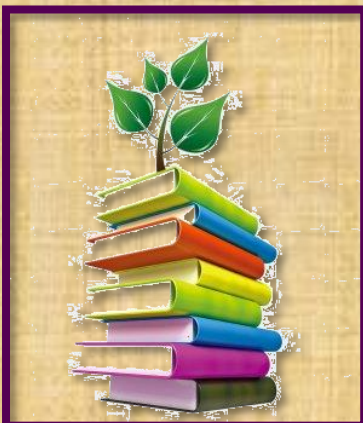
CRITERION – VI

Governance, Leadership and Management

METRIC NO: ~ 6.5.3

METRIC NAME: - Quality assurance initiatives of the institution include:

1. Regular meeting of Internal Quality Assurance Cell (IQAC); Feedback collected, analyzed and used for improvements
2. Collaborative quality initiatives with other institution(s)
3. Participation in NIRF
4. any other quality audit recognized by state, national or international agencies (ISO Certification, NBA)



**Web: - mgcollegearmori.ac.in
e-mail: - mgcollege.armori@gmail.com
Phone: - 07137-266558**



MANOHARBHAI SHIKSHAN PRASARAK MANDAL ARMORI'S
**MAHATMA GANDHI ARTS, SCIENCE &
LATE NASARUDDINBHAI PANJWANI COMMERCE COLLEGE**



ARMORI Dist. Gadchiroli (M.S.) 441 208
Affiliated to Gondwana University, Gadchiroli
Re-accredited by NAAC 'A' with 3.24 CGPA(2022)
Web: mgcollegearmori.ac.in

Dr. Lalsingh H. Khalsa
Principal & IQAC Chairman
Mob. No. 9422153197
E-mail: lalsinghkhalsa@yahoo.com

Dr. Satish. S. Kola
IQAC Coordinator
Mob. 9595982057
E-mail: satish.kolawar@gmail.com

Certificate of Verification

The document herewith is a testimonial of the following specifics;

- AQAR 2022-23
- Criterion - **VI (Governance, Leadership and Management)**
- Metric no. - **6.5.3**
- Metric Particular - **Quality assurance initiatives of the institution include**
- **Regular meeting of Internal Quality Assurance Cell (IQAC); Feedback collected, analyzed and used for improvements**
- **Collaborative quality initiatives with other institution(s)**
- **Participation in NIRF**
- **any other quality audit recognized by state, national or international agencies (ISO Certification, NBA)**

It is affirmed that the attached document pertinent to the above cited specifics are duly verified and approved by the IQAC.

Criterion Head

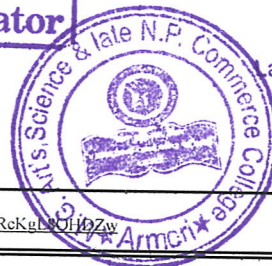
IQAC Coordinator

IQAC-Co-ordinator

IQAC Chairperson

PRINCIPAL

M.G. Arts, Science &
Late N.P. Commerce College
ARMORI, Dist. Gadchiroli



NAAC

Institutional Assessment and Accreditation

(Effective from July 2017)

Accreditation - (Cycle: 4)

**MAHATMA GANDHI ARTS, SCIENCE AND LATE
NASARUDDHINBHAI PANJWANI COMMERCE COLLEGE,
ARMORI, Maharashtra, 441208**

Track ID : MHCOGN11003

AISHE-ID : C-18355

Visit dates : 07 - 09 - 2022 to 08 - 09 - 2022

Grade Sheet



NATIONAL ASSESSMENT AND ACCREDITATION COUNCIL

An Autonomous Institution of the University Grants Commission

P.O. Box No. 1075, Nagarbhavi, Bengaluru - 560 072, INDIA

Name of the Institution: MAHATMA GANDHI ARTS, SCIENCE AND LATE
NASARUDDHINBHAI PANJWANI COMMERCE COLLEGE

Type of the Institution: Affiliated college

Dates of Visit: 07 - 09 - 2022 to 08 - 09 - 2022

No	Criteria	Weightage (W_i)	Criterion-wise weighted Grade Point (CrWGP _i)	Criterion- wise Grade Point Averages (CrWGP _i / W_i)
1	Curricular Aspects	100	340	3.4
2	Teaching-learning and Evaluation	350	1083	3.09
3	Research, Innovations and Extension	110	365	3.32
4	Infrastructure and Learning Resources	100	347	3.47
5	Student Support and Progression	120	440	3.67
6	Governance, Leadership and Management	100	292	2.92
7	Institutional Values and Best Practices	100	306	3.06
Total		$\sum_{i=1}^7 (W_i) = 980$	$\sum_{i=1}^7 (CrWGP_i) = 3173$	3.24

$$\text{Institutional CGPA} = \frac{\sum_{i=1}^7 (CrWGP_i)}{\sum_{i=1}^7 (W_i)} = \frac{3173}{980} = 3.24$$

Grade: A

No	Criteria and Key Indicators	Key Indicator Weightage (W _i)	Key Indicator Wise Weighted Grade Points (KIWGP) _i
Criterion 1: Curricular Aspects			
1.1	Curricular Planning and Implementation	20	70
1.2	Academic Flexibility	30	110
1.3	Curriculum Enrichment	30	80
1.4	Feedback System	20	80
Total		∑ W₁=100	∑ (KIWGP)₁ =340
Calculated CrGPA₁ = ∑ (KIWGP)₁ / ∑ W₁ = 340 / 100 = 3.4			
Criterion 2: Teaching-learning and Evaluation			
2.1	Student Enrollment and Profile	40	140
2.2	Catering to Student Diversity	50	90
2.3	Teaching- Learning Process	50	105
2.4	Teacher Profile and Quality	60	240
2.5	Evaluation Process and Reforms	30	105
2.6	Student Performance and Learning Outcomes	60	180
2.7	Student Satisfaction Survey	60	223
Total		∑ W₂=350	∑ (KIWGP)₂ =1083
Calculated CrGPA₂ = ∑ (KIWGP)₂ / ∑ W₂ = 1083 / 350 = 3.09			
Criterion 3: Research, Innovations and Extension			
3.1	Resource Mobilization for Research	15	45
3.2	Innovation Ecosystem	10	35
3.3	Research Publications and Awards	25	50
3.4	Extension Activities	50	195
3.5	Collaboration	10	40
Total		∑ W₃=110	∑ (KIWGP)₃ =365
Calculated CrGPA₃ = ∑ (KIWGP)₃ / ∑ W₃ = 365 / 110 = 3.32			
Criterion 4: Infrastructure and Learning Resources			
4.1	Physical Facilities	30	100
4.2	Library as a Learning Resource	20	62
4.3	IT Infrastructure	30	115
4.4	Maintenance of Campus	20	70

No	Criteria and Key Indicators	Key Indicator Weightage (W _i)	Key Indicator Wise Weighted Grade Points (KIWGP) _i
	Infrastructure		
Total		$\sum W_4=100$	$\sum (KIWGP)_4 =347$
Calculated CrGPA₄ = $\sum (KIWGP)_4 / \sum W_4 = 347 / 100 = 3.47$			
Criterion 5: Student Support and Progression			
5.1	Student Support	50	185
5.2	Student Progression	15	60
5.3	Student Participation and Activities	45	175
5.4	Alumni Engagement	10	20
Total		$\sum W_5=120$	$\sum (KIWGP)_5 =440$
Calculated CrGPA₅ = $\sum (KIWGP)_5 / \sum W_5 = 440 / 120 = 3.67$			
Criterion 6: Governance, Leadership and Management			
6.1	Institutional Vision and Leadership	10	30
6.2	Strategy Development and Deployment	10	32
6.3	Faculty Empowerment Strategies	30	90
6.4	Financial Management and Resource Mobilization	20	60
6.5	Internal Quality Assurance System	30	80
Total		$\sum W_6=100$	$\sum (KIWGP)_6 =292$
Calculated CrGPA₆ = $\sum (KIWGP)_6 / \sum W_6 = 292 / 100 = 2.92$			
Criterion 7: Institutional Values and Best Practices			
7.1	Institutional Values and Social Responsibilities	50	156
7.2	Best Practices	30	90
7.3	Institutional Distinctiveness	20	60
Total		$\sum W_7=100$	$\sum (KIWGP)_7 =306$
Calculated CrGPA₇ = $\sum (KIWGP)_7 / \sum W_7 = 306 / 100 = 3.06$			
Grand Total		980	3173

$$\text{Institutional CGPA} = \sum_{i=1}^7 (CrWGP)_i / \sum_{i=1}^7 (W_i) = 3173 / 980 = 3.24$$



राष्ट्रीय मूल्यांकन एवं प्रत्यायन परिषद
विश्वविद्यालय अनुदान आयोग का स्वायत्त संस्थान
NATIONAL ASSESSMENT AND ACCREDITATION COUNCIL
An Autonomous Institution of the University Grants Commission

Certificate of Accreditation

*The Executive Committee of the
National Assessment and Accreditation Council
is pleased to declare*

*Mahatma Gandhi Arts, Science and
Late Nasaruddhinbhai Panjwani Commerce College
Bardi, Tal. Armori, Dist. Gadchiroli, affiliated to Gondwana University,
Maharashtra as
Accredited*

*with CGPA of 3.24 on four point scale
at A grade
valid up to September 12, 2027*

Date : September 13, 2022



S. C. Dhone
Director